

Food production in a Circular Bioeconomy

Anna Fysjö, Arla Foods

Life Cycle Sustainability Manager

CBIO seminar at Foulum 15 March 2018



Arla Foods



Products sold in
100+
countries

10
bn EUR revenue

14
bn kg milk intake

19 000
colleagues

11 300
owners

Largest producer of organic dairy products



We provide dairy that
nourishes body and
soul throughout life



Milk, yogurt, powder and cooking 45%

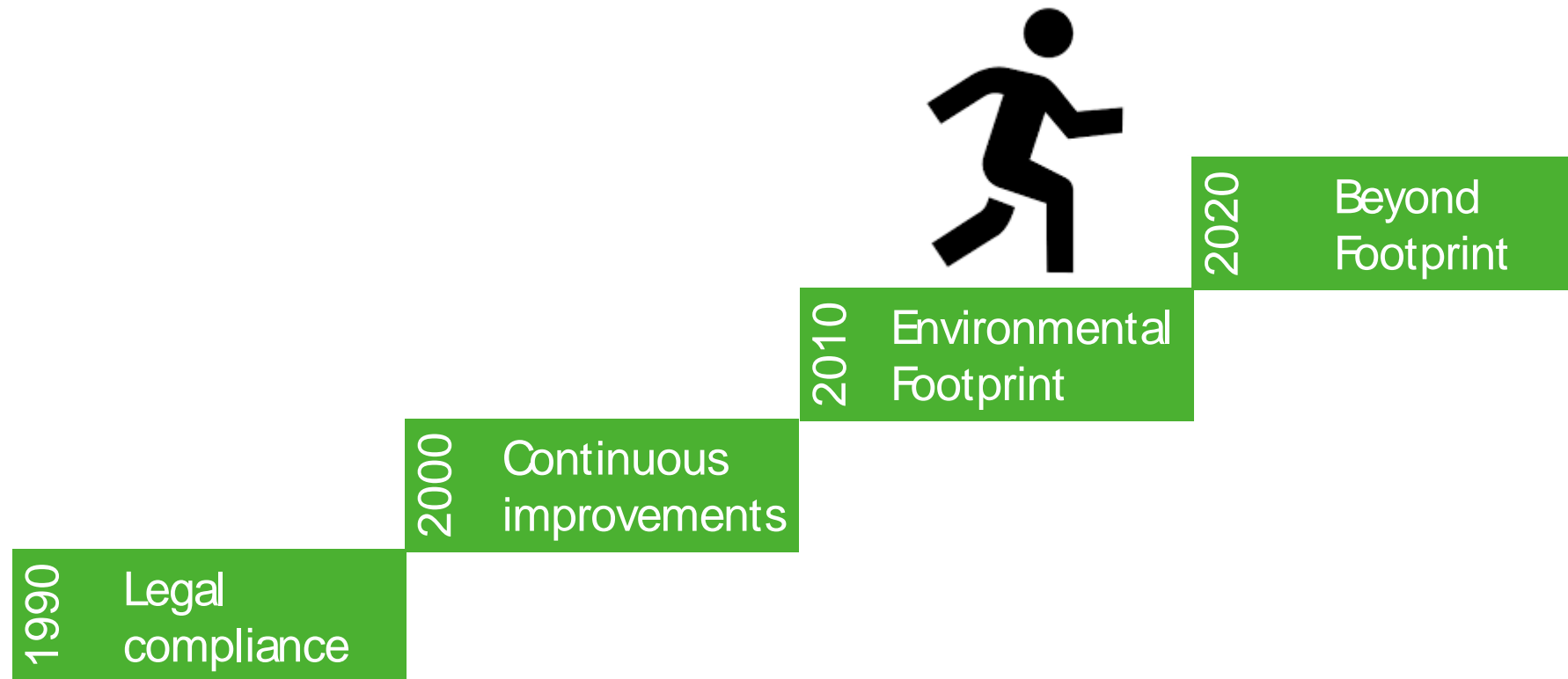
Cheese 26%

Butter & spreads 14%

Other 15%

Arla's sustainability journey

Broadening the scope in terms of impacts as well as value chain



Arla Foods' Environmental Strategy 2020 – status



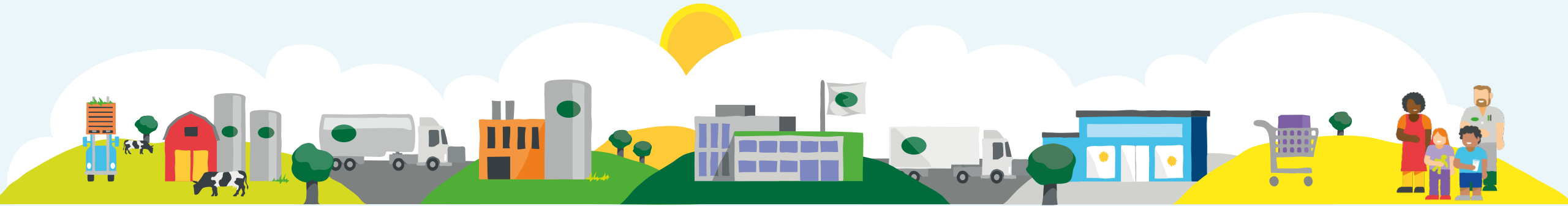
-30% CO2e

per kg milk at farm level



-25% CO2e

operation, transport, packaging



Animal

Nature

100% responsible soy

50% renewable energy

Energy & water efficiency (3% per year)

Zero waste to landfill

100% sustainable cocoa & palm oil

-50% food waste

100% packaging recycled

Sustainable Dairy Farming Strategy 2020

ANIMAL WELFARE

Cows are treated with care

CLIMATE IMPACT

Emissions from farming are continually reduced

GOOD RELATIONS

Farms are attractive places to work and natural partners for their communities

INTERACTION WITH NATURE

Farms are working as one with their environment



Greenhouse gases at farm level

Goal for 2020

Total carbon footprint per kg milk from Arla farms will be reduced by 30% compared to 1990

Achievements

23%

Reduced CF
1990 - 2015

4 533

Carbon assessments

394

Energy
assessments

358

Farm workshops on
climate and efficiency



CLIMATE



make
a positive
difference

reduce
WASTE

'We were forever having to replace bulbs in our previous lighting but the LEDs have a very long life and are hugely energy efficient'

CLIMATE IMPACT

Continually reduce emissions from farming

REDUCE CARBON FOOTPRINT

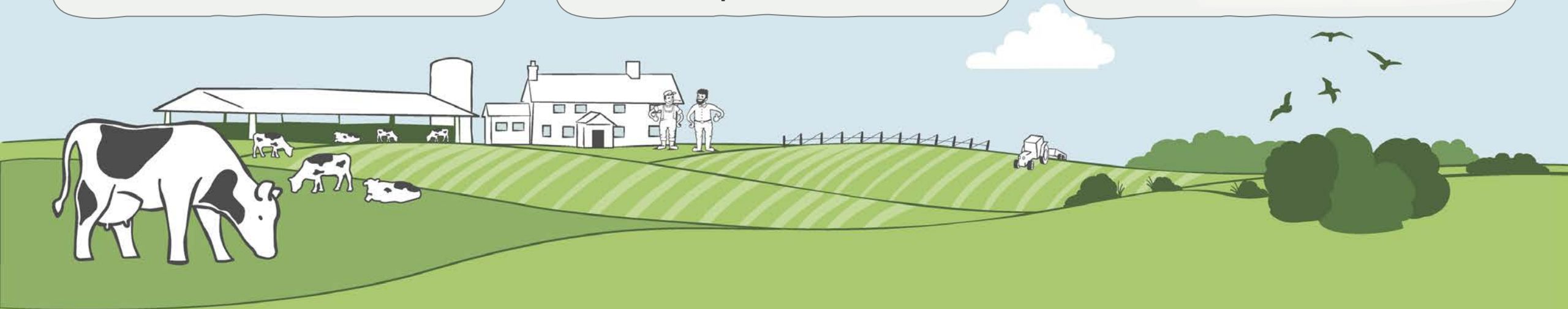
Carbon footprint is reduced by 30% per kg milk 1990 – 2020

PROMOTE CARBON CAPTURE

Develop reliable methods for monitoring and promoting carbon capture at farm level

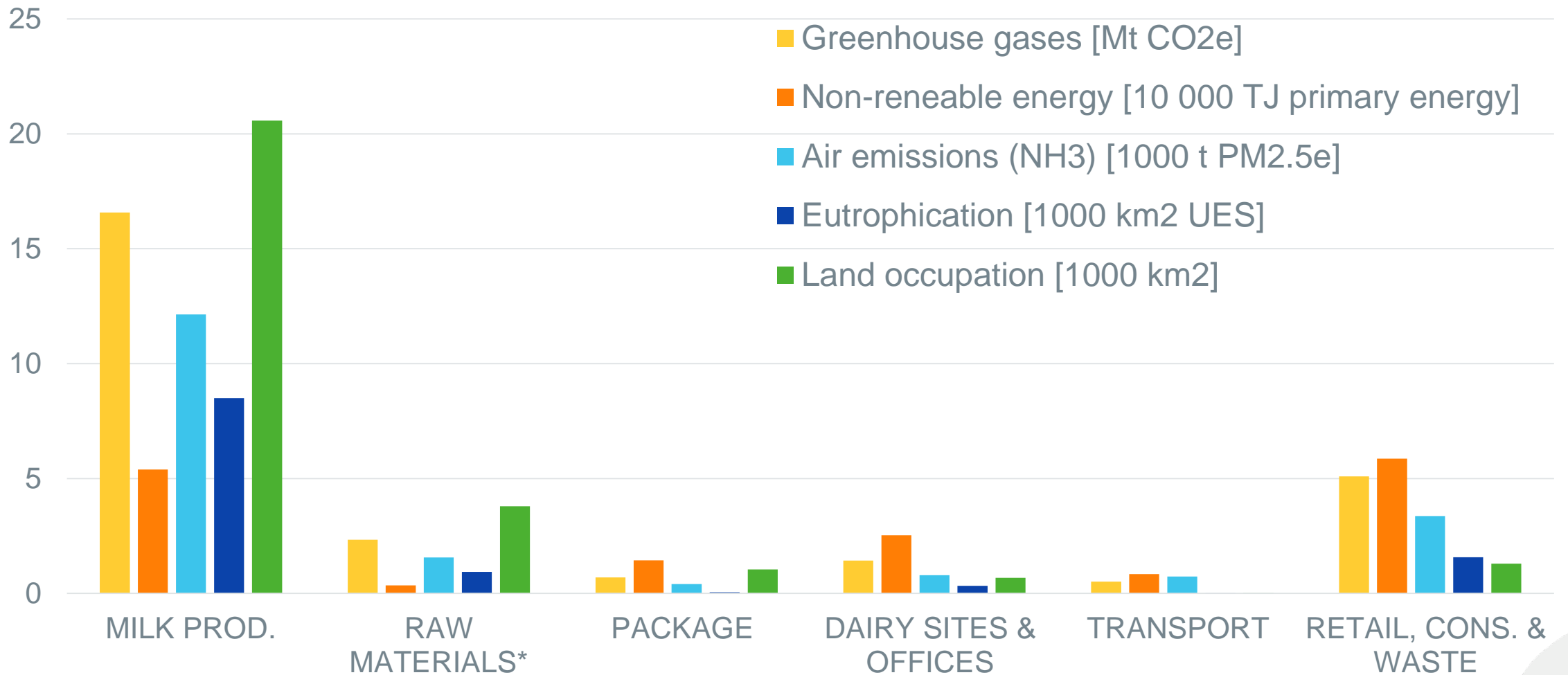
GREEN ENERGY

Arla farms are overall net producers of green electricity



Environmental impact for Arla Foods total production

Most significant environmental impact categories (EP&L 2014)



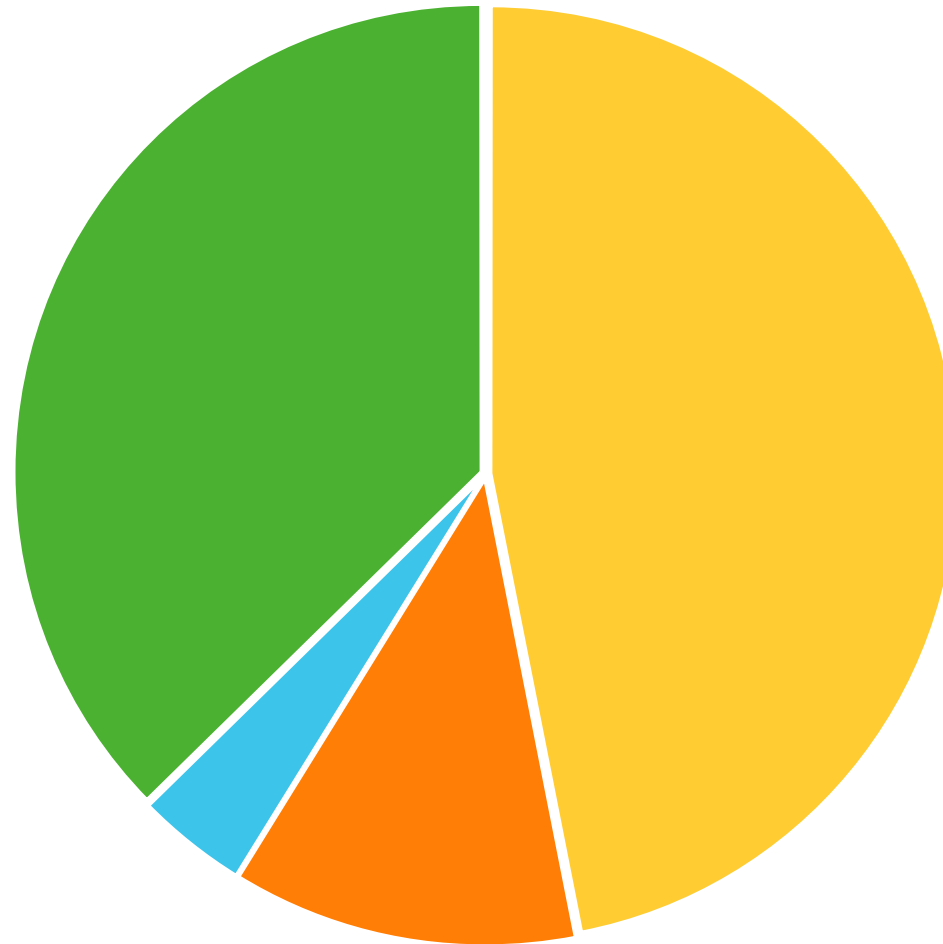
*including purchased dairy products



Carbon Footprint of milk at farm level in Denmark 2012

1.18 kg CO₂e per kg milk (Dalgaard *et al.*, 2016)

Feed production stands for about 40% of milk's carbon footprint.



- CH4 enteric fermentation
- Manure handling & storage
- Electricity & other
- Feed

Our principles towards sustainability

from Fossil
to Renewable



Circular
Economy

Cooperation in
the value chain



Professorship in Sustainable Dairy Production

Why is it important to Arla

- Sustainability is high on the agenda for Arla – not least at farm level
- We have environmental and sustainability strategies
- Investing in a professorship in order to support Arla's activities and fulfil strategies



Thank you!

Anna Flysjö
anna.flysjo@arlafoods.com